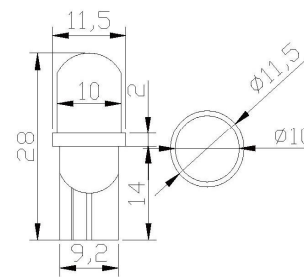




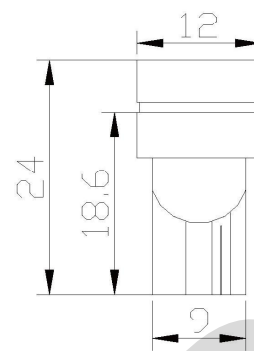
T10 Round	Part Number
white	W5YKTA31B
yellow	Y5RUTA31B
red	R5RUTA31B
green	G5DUTA31B
blue	B5YUTA31B



T10 3-Chips SMD LED

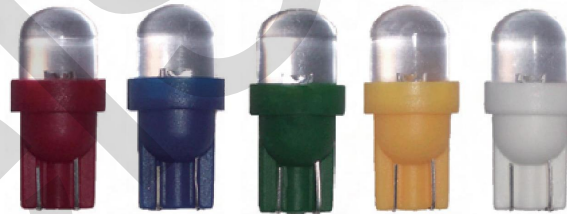


W473S4C1A



## Automotive LED T10 Series

- ◆ Width-indicator Lamp
- ◆ Signal Light



### ■ Absolute Maximum Ratings (Ta=25°C)

Items	Symbol	Values	Units
Operating Supply Range(DC)	V <sub>dc</sub>	16	V
Input Current (DC)	I <sub>i</sub>	30	mA
Power Dissipation	P <sub>a</sub>	0.48	W
Operating Temperature	T <sub>ope</sub>	-10 ~ +40	DegC
Storage Temperature	T <sub>sto</sub>	-20 ~ +80	DegC

### ■ Typical Performance (Ta=25°C)

Items	Symbol	Min	Typ	Max	Units
LED Module Power	P <sub>m</sub>	-	0.24	0.48	w
Input Voltage(DC)	V <sub>i</sub>	-	12	16	V
Product Input Current	I <sub>f</sub>	-	20	30	mA
Beam Pattern	BP	-	-	-	Deg
Total Diameter of PCB	L <sub>mod.</sub>	-	28	-	mm
Net Weight	Wei.	---	1.6	---	g